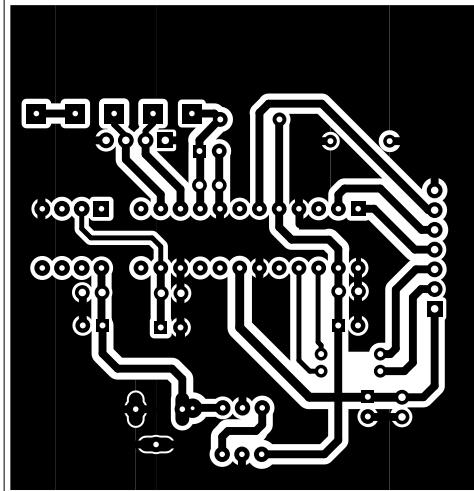
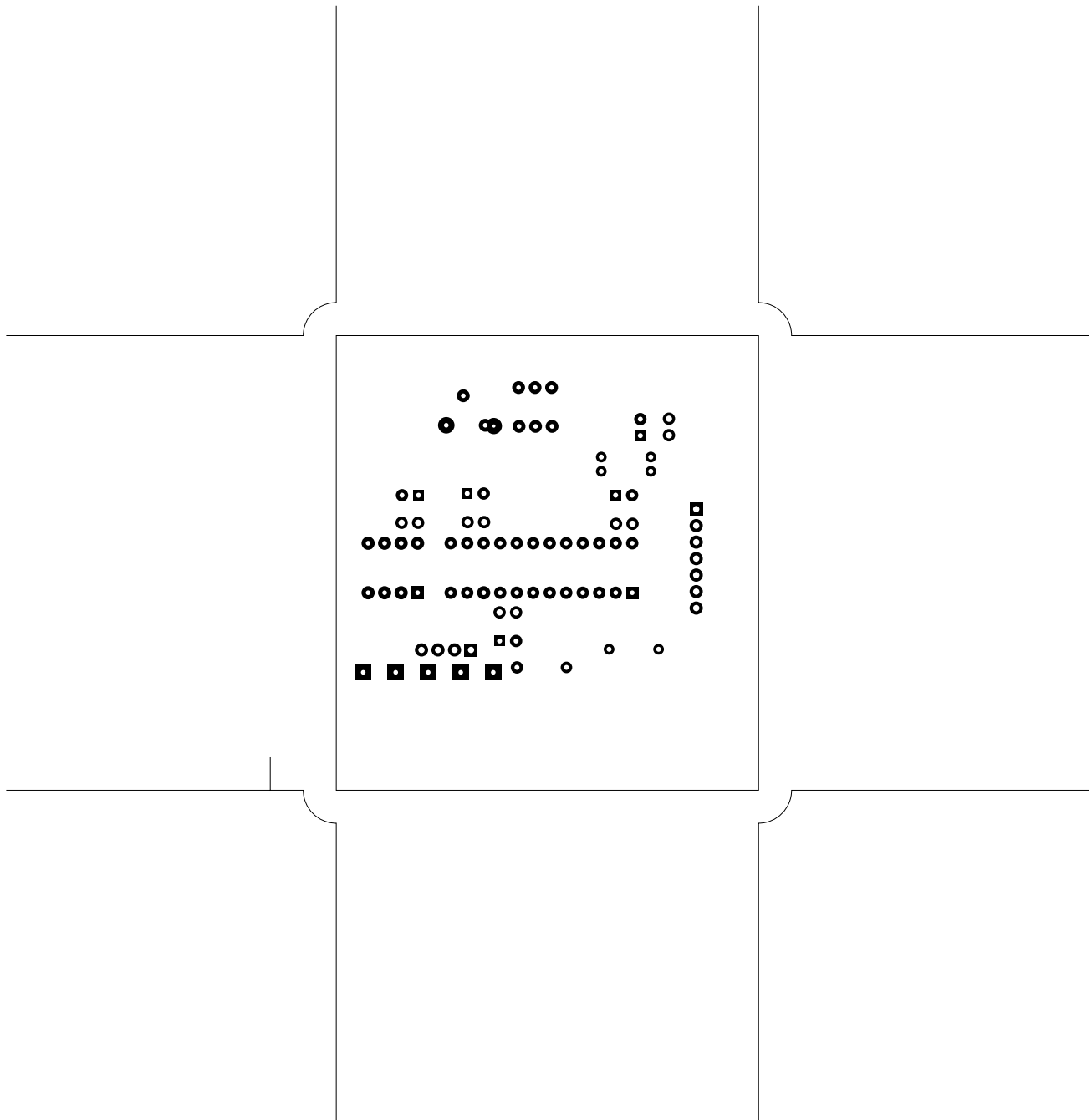
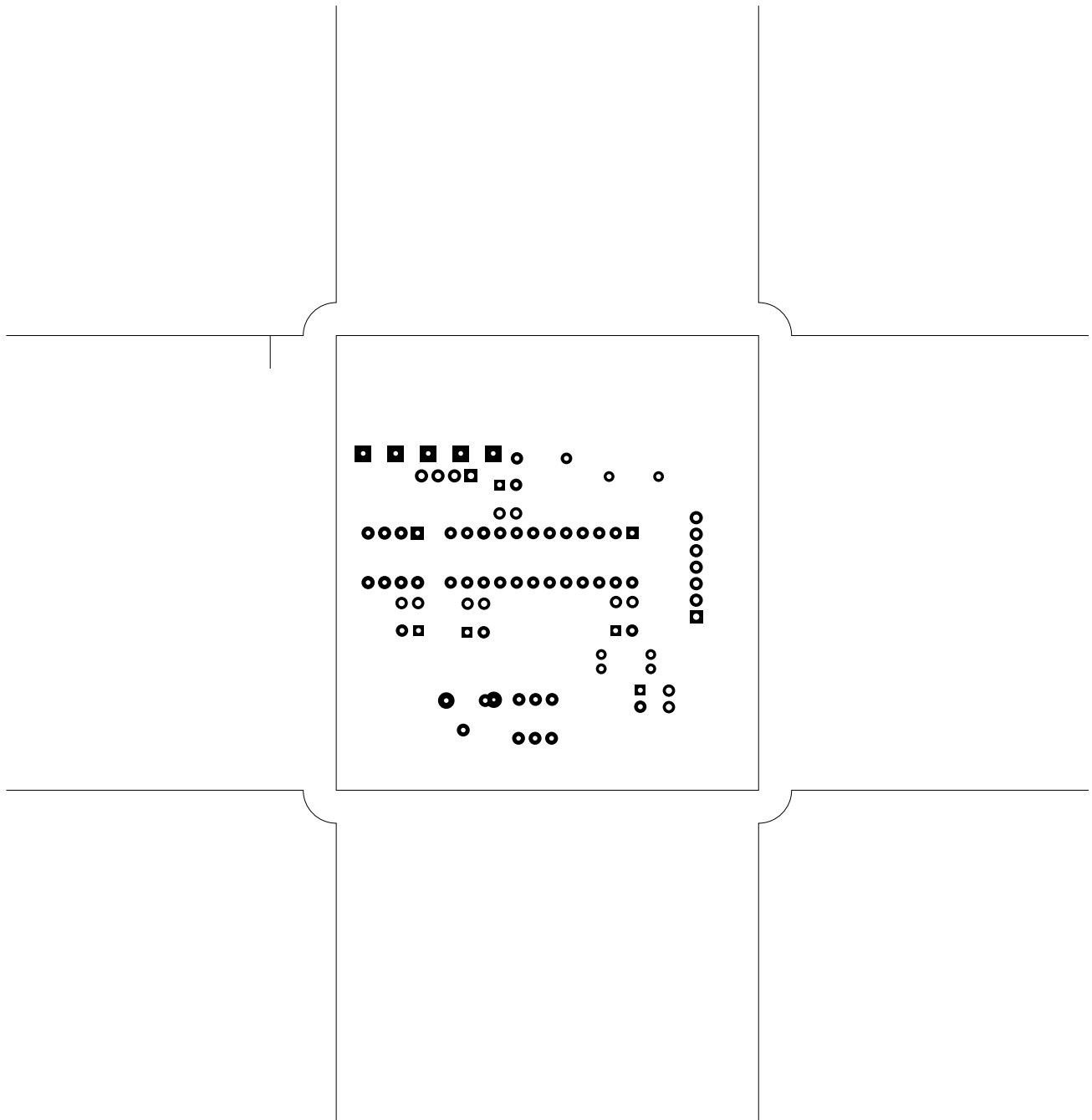
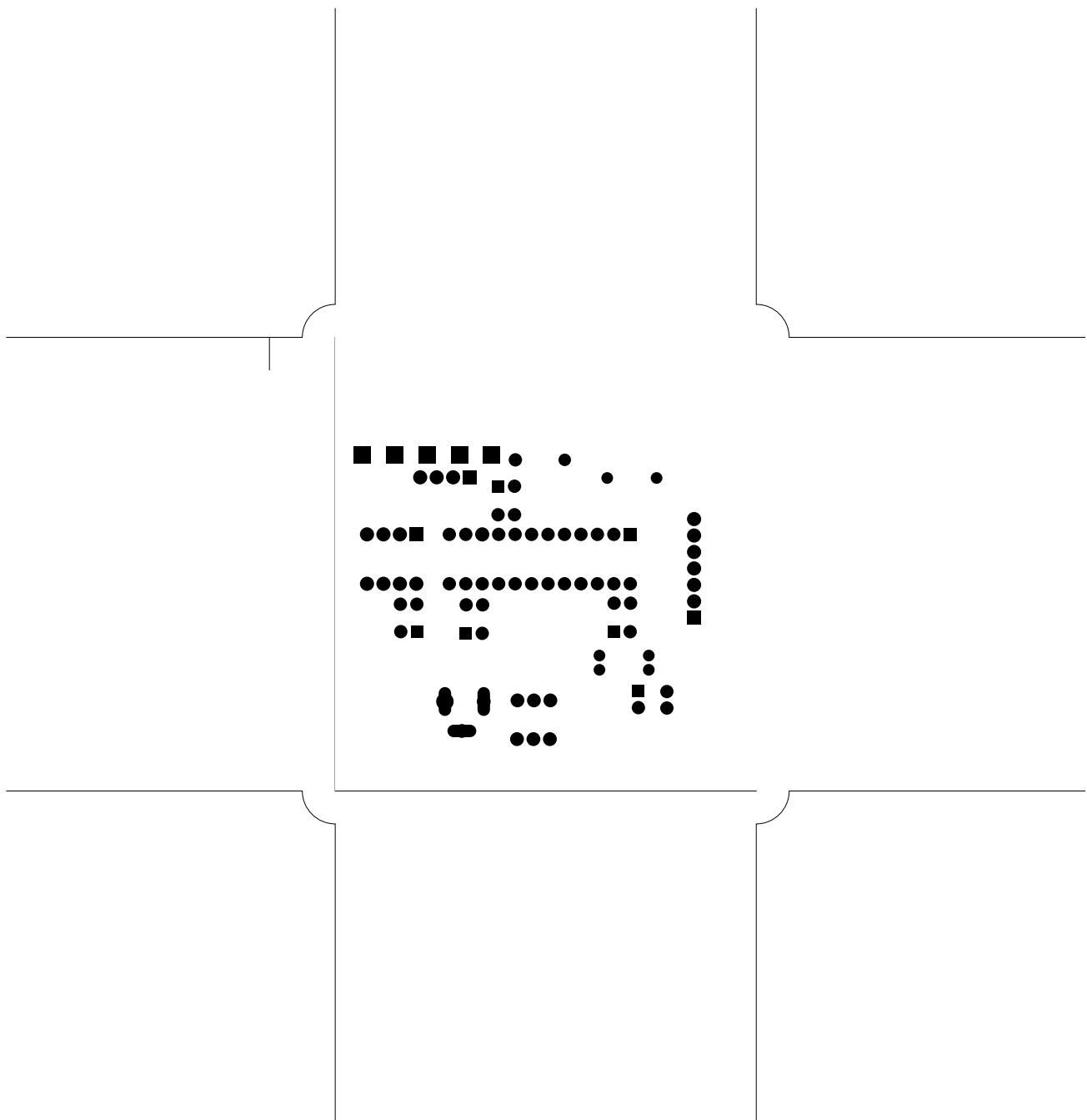


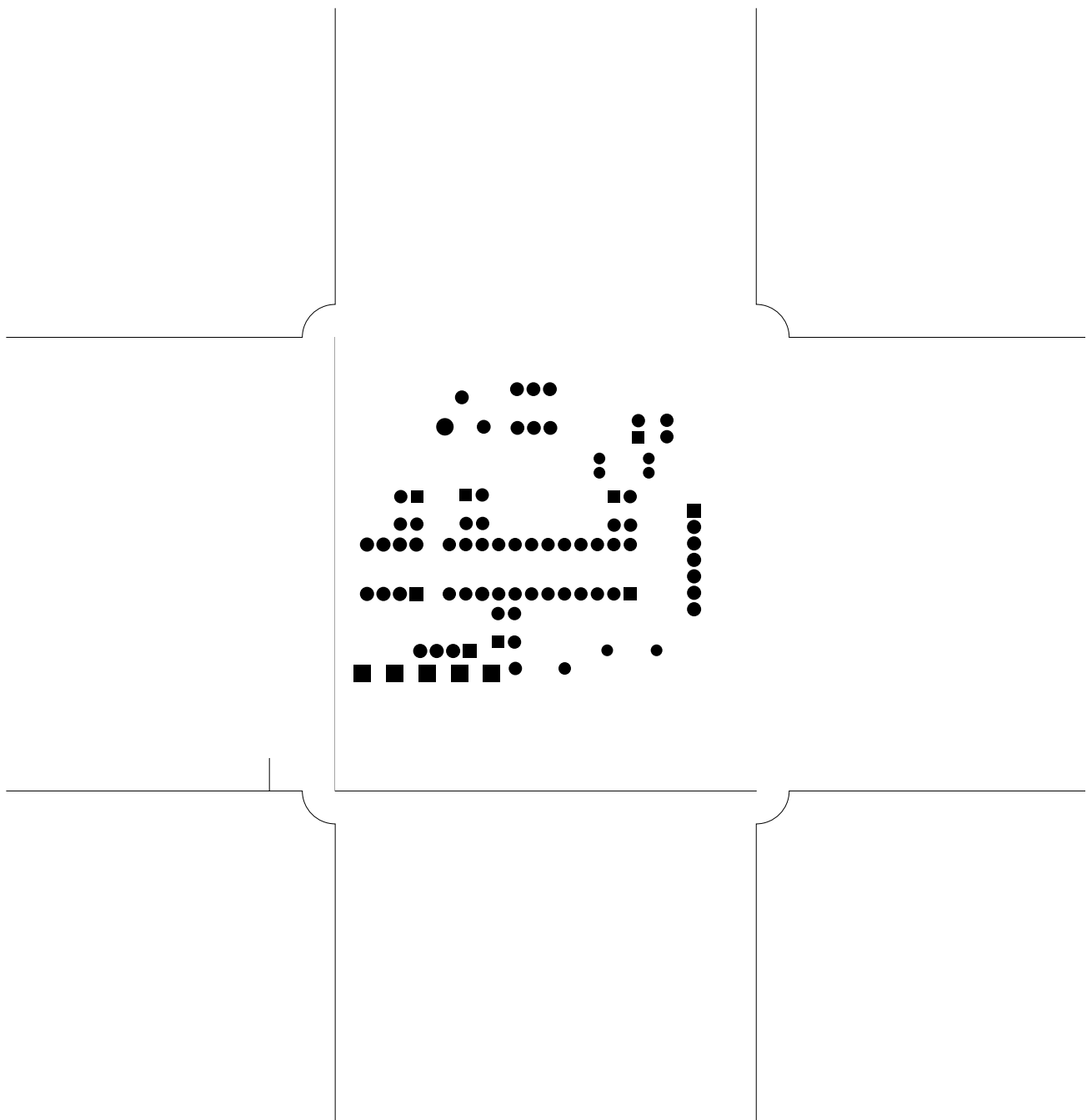
2. component
3. solder
4. GND
5. componentmask
6. soldermask
7. plated-drill
8. topsilk
9. bottomsilk
10. toppaste
11. topassembly
12. bottomassembly
13. fab

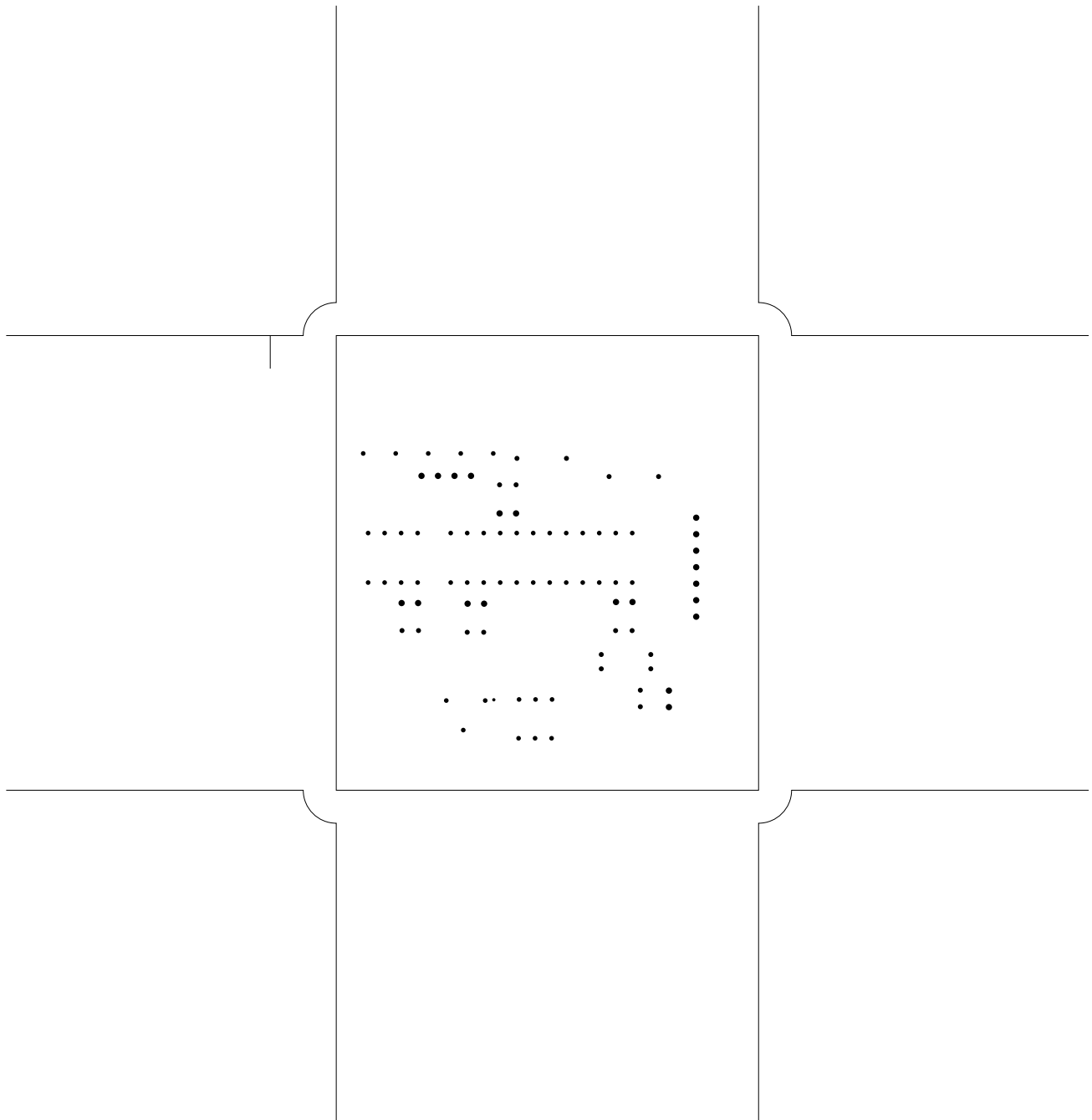


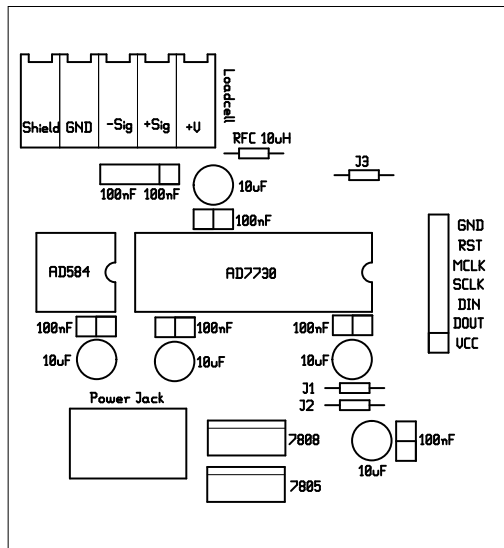


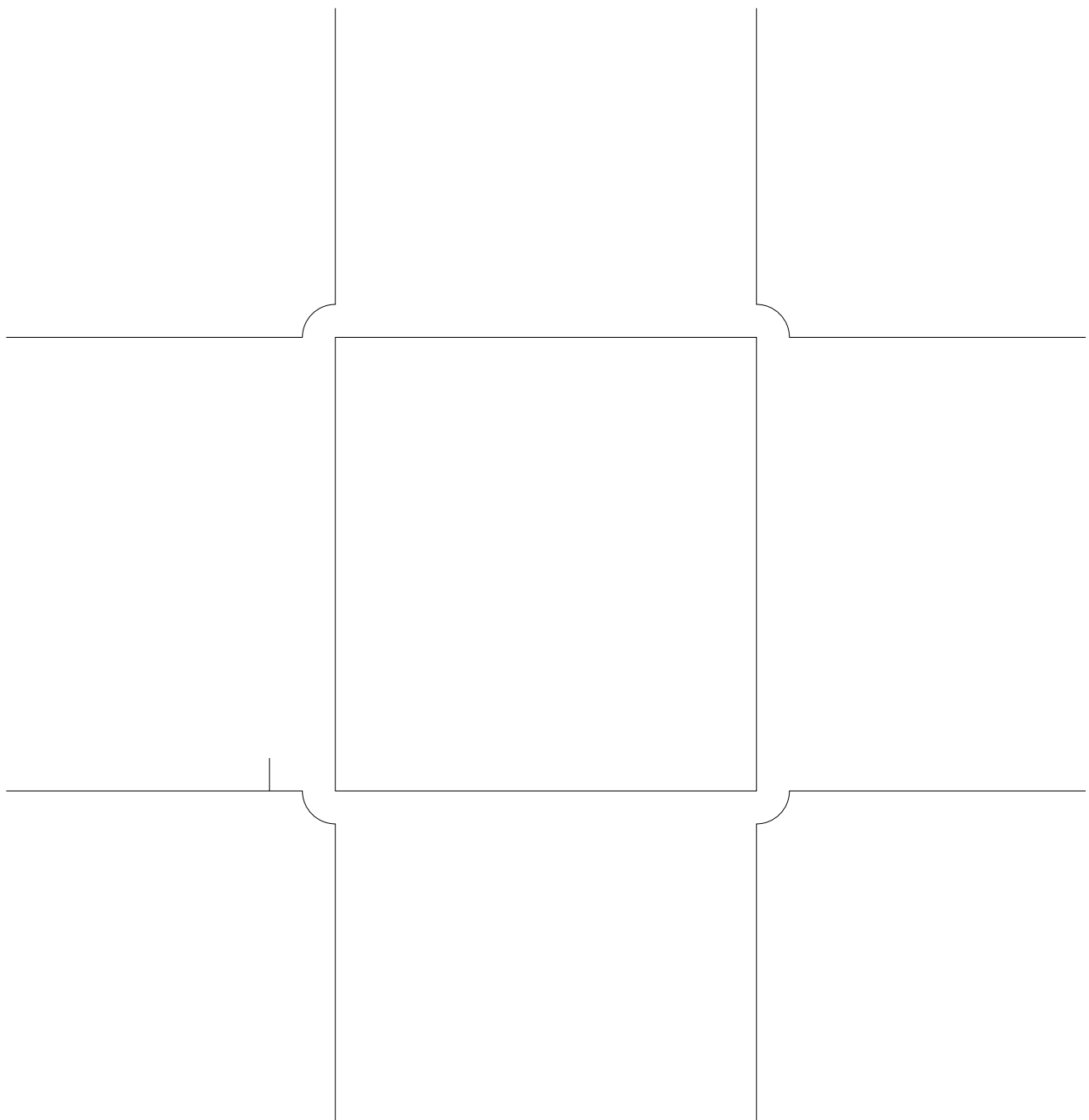


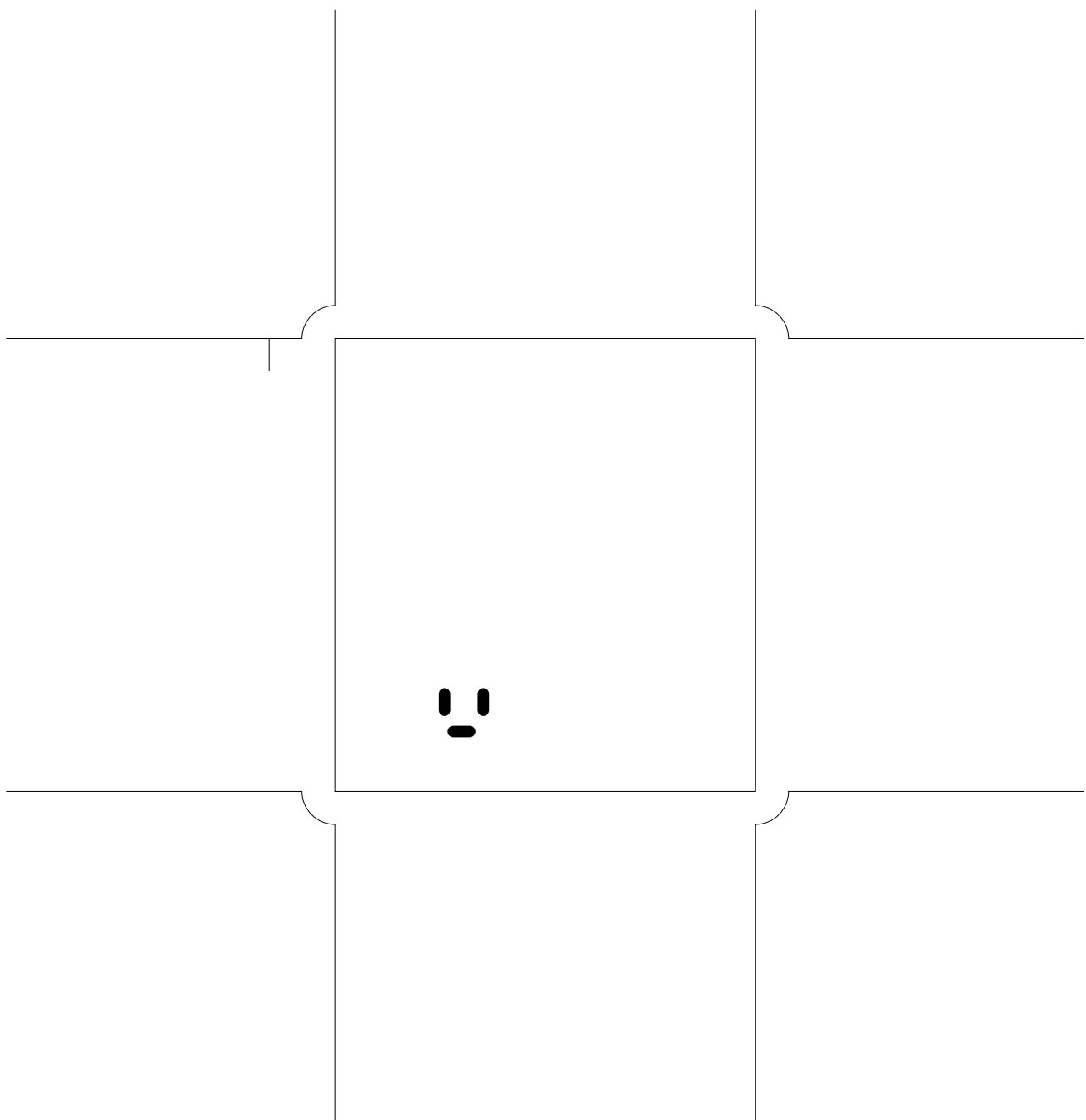


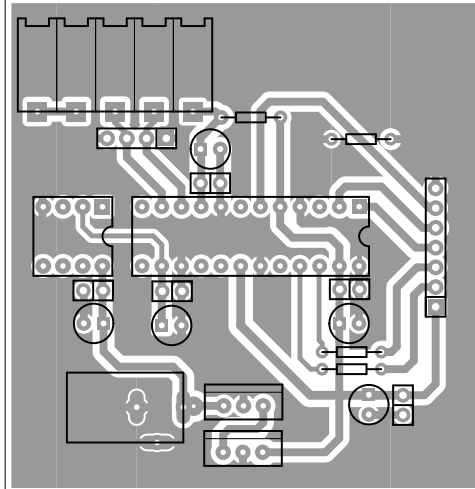


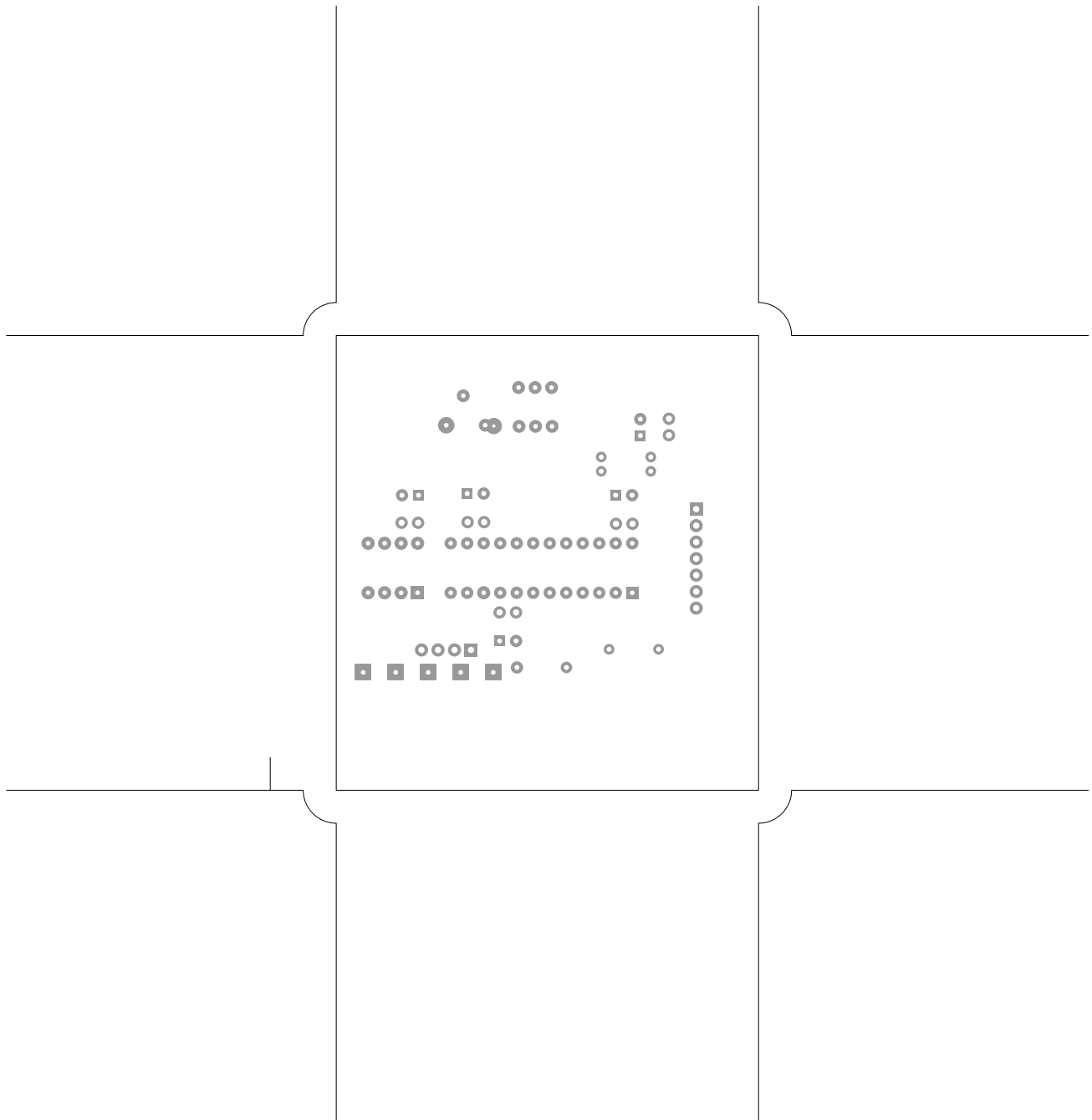






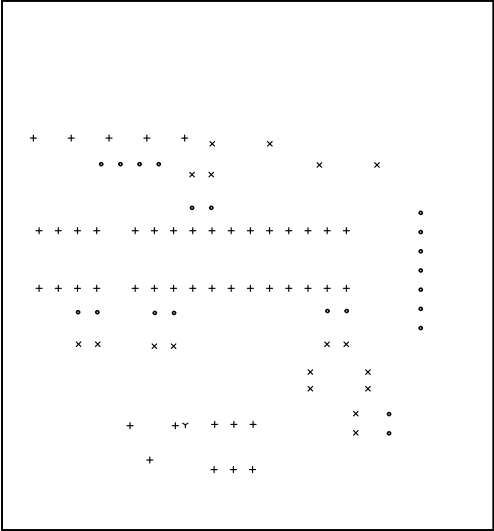






There are 4 different drill sizes used in this layout, 86 holes total

Symbol	Diam. (Inch)	Count	Plated?	
γ	<u>0.020</u>	<u>1</u>	<u>YES</u>	Title: (unknown) - Fabrication Drawing
+	<u>0.028</u>	<u>46</u>	<u>YES</u>	Author: Hamid Rostami
x	<u>0.030</u>	<u>18</u>	<u>YES</u>	Date: Wed 15 Oct 2008 10:25:01 PM GMT UTC
•	<u>0.038</u>	<u>21</u>	<u>YES</u>	Maximum Dimensions: 2559 mils wide, 2755 mils high



Board outline is the centerline of this 10 mil rectangle - 0,0 to 2559/2755 mils